

Intracom VCOM v331 Inward DTMF configuration



VCOM System Administration.Ink

Open the Vcom System Administrator Program

A screenshot of the VCOM System Administration Login dialog box. It has a title bar that says "VCOM System Administration Login - Default". Inside, there are two input fields: "Login Name:" with the text "admin" and "Login Password:". To the right of the "Login Name" field is a "LOGIN" button. Below the "Login Password" field is a larger empty text box. At the bottom left is a "Configure..." button, and at the bottom right is a checkbox labeled "Login Automatically".

User: admin

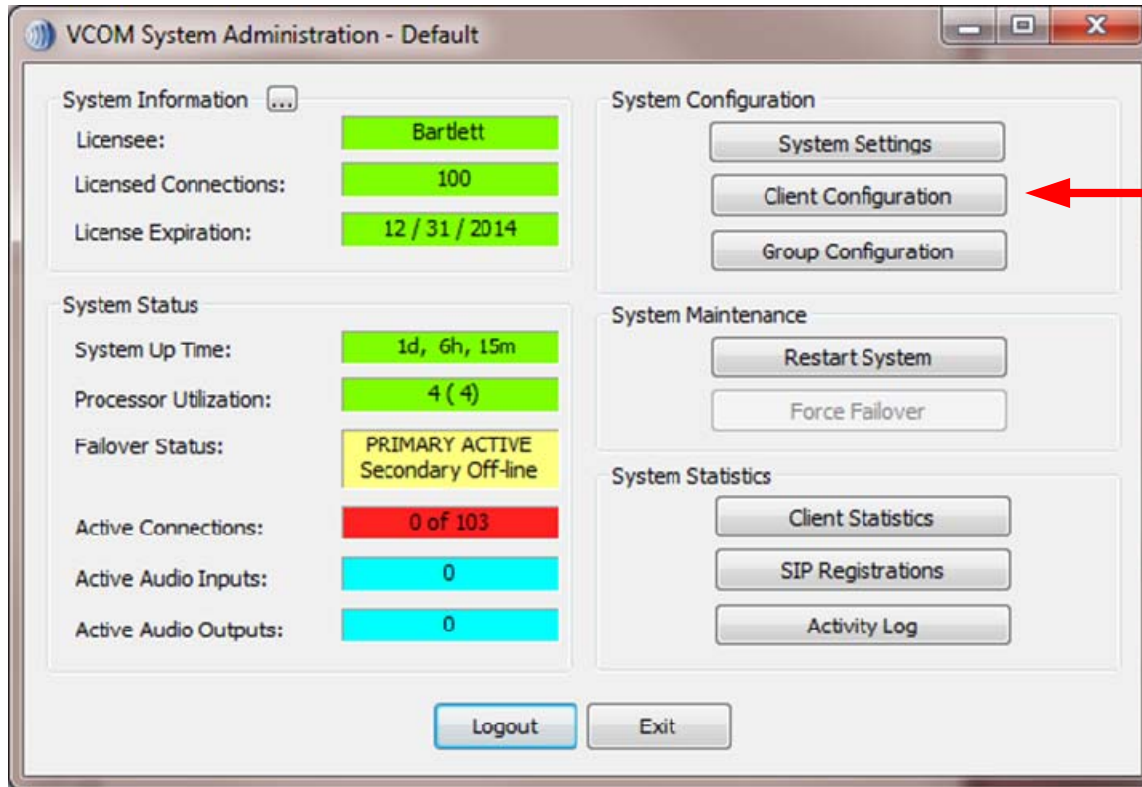
Password:

A screenshot of the VCOM System Administration Configuration dialog box. It has a title bar that says "VCOM System Administration Configuration - Default". Under the heading "Network Settings", there are two rows of settings. The first row is "System Configuration IP Address" with a dropdown menu showing "192.168.1.149". The second row is "Virtual Matrix IP Address" with a text box containing "192.168.1.34" and a port field containing "1000". At the bottom center is an "Apply" button. A red arrow points from the "System Configuration IP Address" dropdown to the right, and another red arrow points from the "Virtual Matrix IP Address" text box to the bottom.

This is your computer address (Do not change)

If you can not log into the Virtual matrix, verify the virtual Matrix IP address is correct.

Intracom VCOM v331 Inward DTMF configuration



Enter into the Client Configuration tab

Intracom VCOM v331 Inward DTMF configuration

Client List

Type	Talk/Listen Name	Login Name	Login Password	Description	PL	Latchable	
VDI	Four-Wire Interface	Refuel	AID00140-01		Yes	Yes	
VDI	Four-Wire Interface	SharkFM	Shark_FM	Shark FM	Yes	Yes	
VDI	Four-Wire Interface	SPKR_Box	AID00088-09		Yes	Yes	
VDI	Four-Wire Interface	Temp ChC	AID00088-04		Yes	Yes	
VDI	Four-Wire Interface	Temp ChD	AID00088-05		Yes	Yes	
VDI	Four-Wire Interface	White/White	AID00088-02		Yes	Yes	
SIP	Telephone Interface	203	203		No	Yes	
SIP	Telephone Interface	204	204		No	Yes	
SIP	Telephone Interface	Cyber1	Cyber1	Cyber1	No	Yes	
SIP	Telephone Interface	tcis1-1	tcis1-1	tcis1-1	No	Yes	
SIP	Telephone Interface	tcis1-2	tcis1-2	tcis1-2	No	Yes	
SIP	Telephone Interface	TCIS1_2	tcis1_2	tcis1_2	Yes	Yes	
SIP	Telephone Interface	tcis2	tcis2	tcis2	No	Yes	
SIP	Telephone Interface	TEL 1 T	101		No	Yes	
SIP	Telephone Interface	TEL 2 T	102		No	Yes	
SIP	Telephone Interface	TEL 3 T	103		No	Yes	
SIP	Telephone Interface	TEL 4 T	104		No	Yes	
SIP	Telephone Interface	TeleLine 1	201		No	Yes	
SIP	Telephone Interface	TeleLine 2	202		No	Yes	
SIP	Telephone Interface	turbine	turbine	turbine	No	Yes	
SIP	Telephone Interface	Turbine Y	tcis1	tcis1	Turbine TCIS-1	No	Yes

Selected Client

Selector Assignments ... Audio Settings ... Options ...

Templates

Link Selector Assignments Link Audio Settings Link Options

All Clients

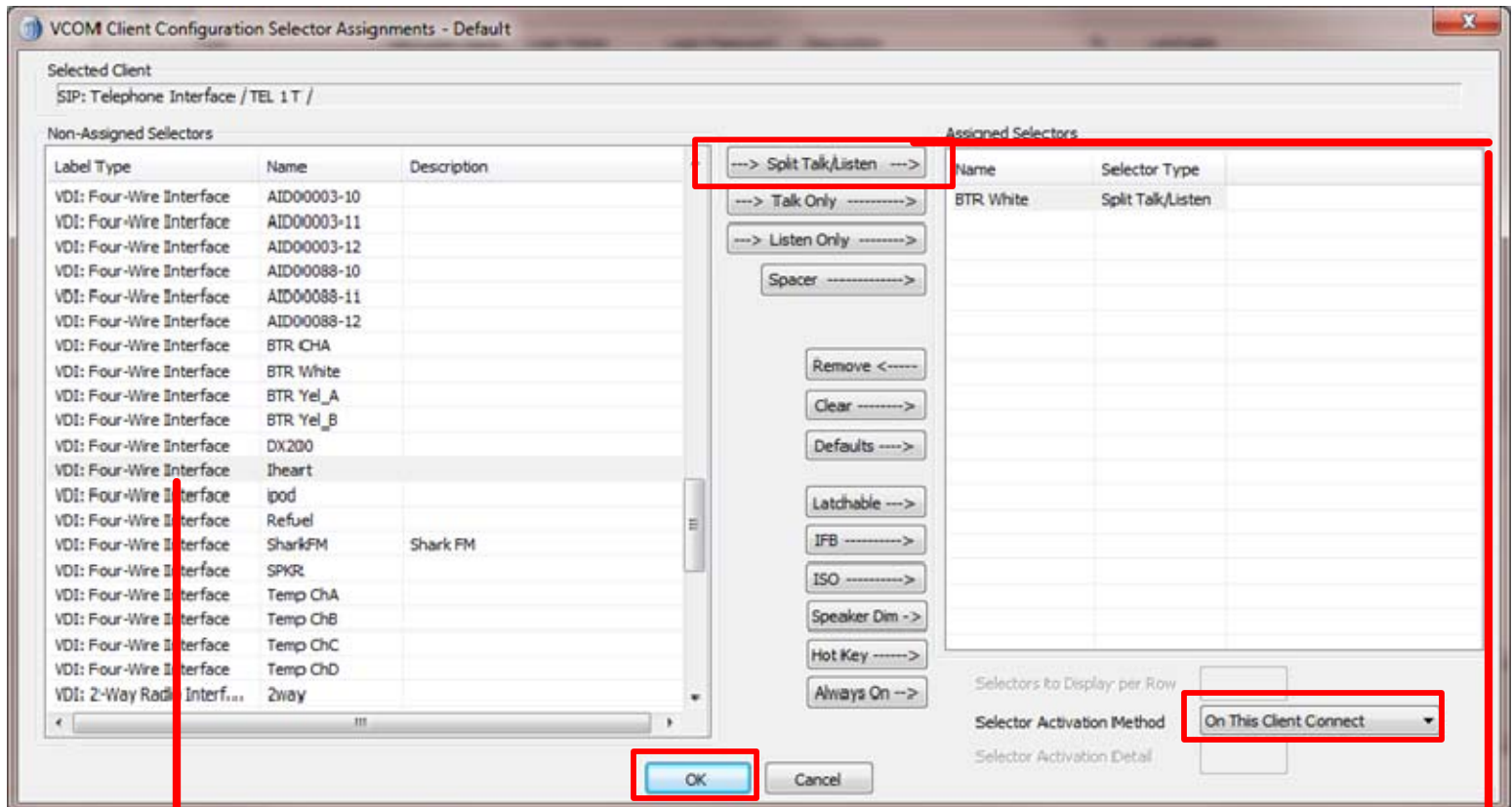
Default Selector Assignments... Default Audio Settings... Default Options...

Highlight the telephone line you want to modify the inward DTMF configuration.

Click on - Open the Selector Assignment

Intracom VCOM v331 Inward DTMF configuration

To have the Telephone line directly connect to one device follow the configuration below:



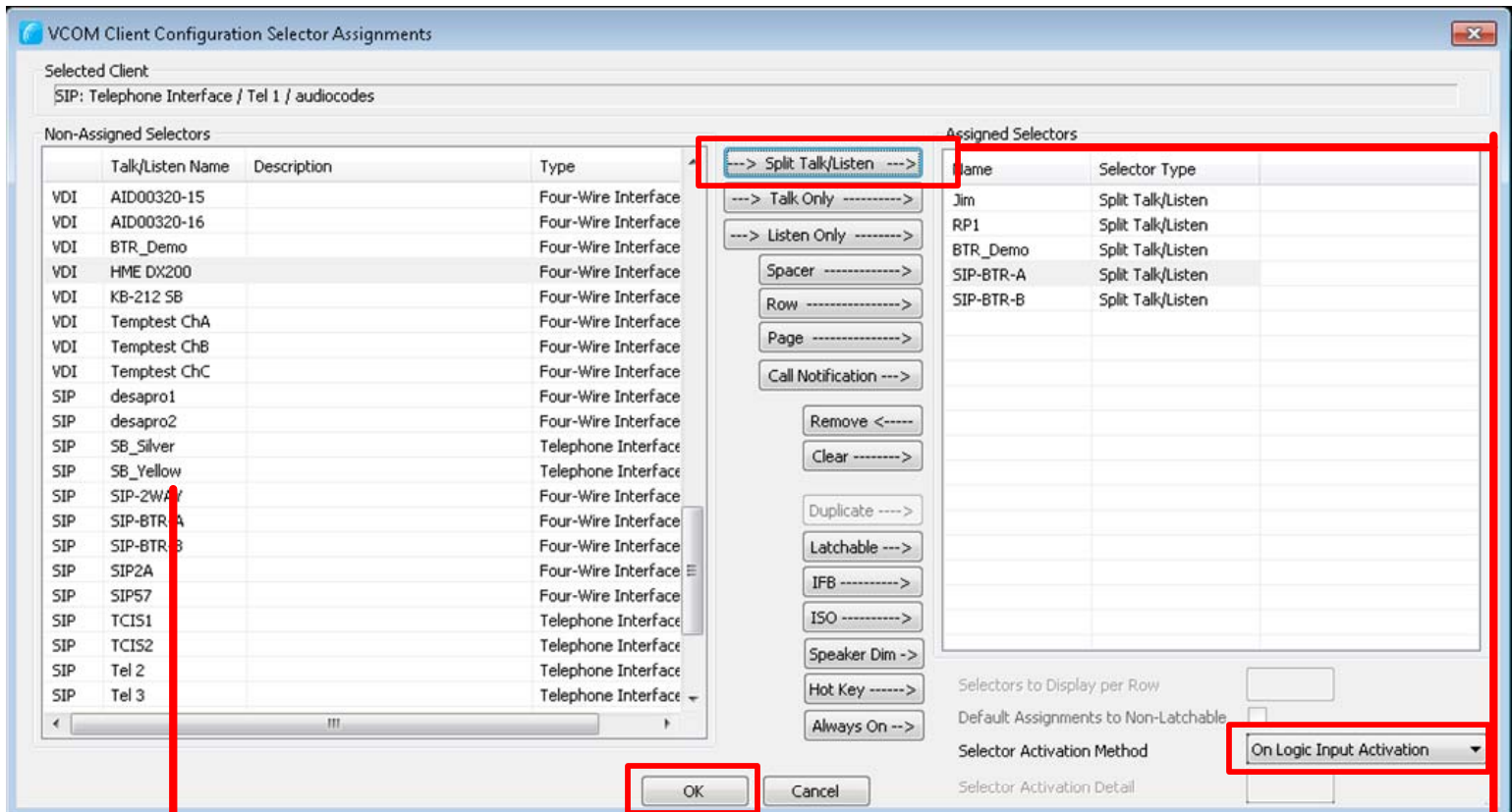
Select the Key Label you want to assign to the inward DTMF panels

Click on Split Talk/Listen

Click OK when Complete

Intracom VCOM v331 Inward DTMF configuration

To have the telephone line dialer able to use their telephone dial pad to select which devices they would like to talk with, use this configuration below:



Select the Key Label you want to assign to the inward DTMF panels

Click on Split Talk/Listen

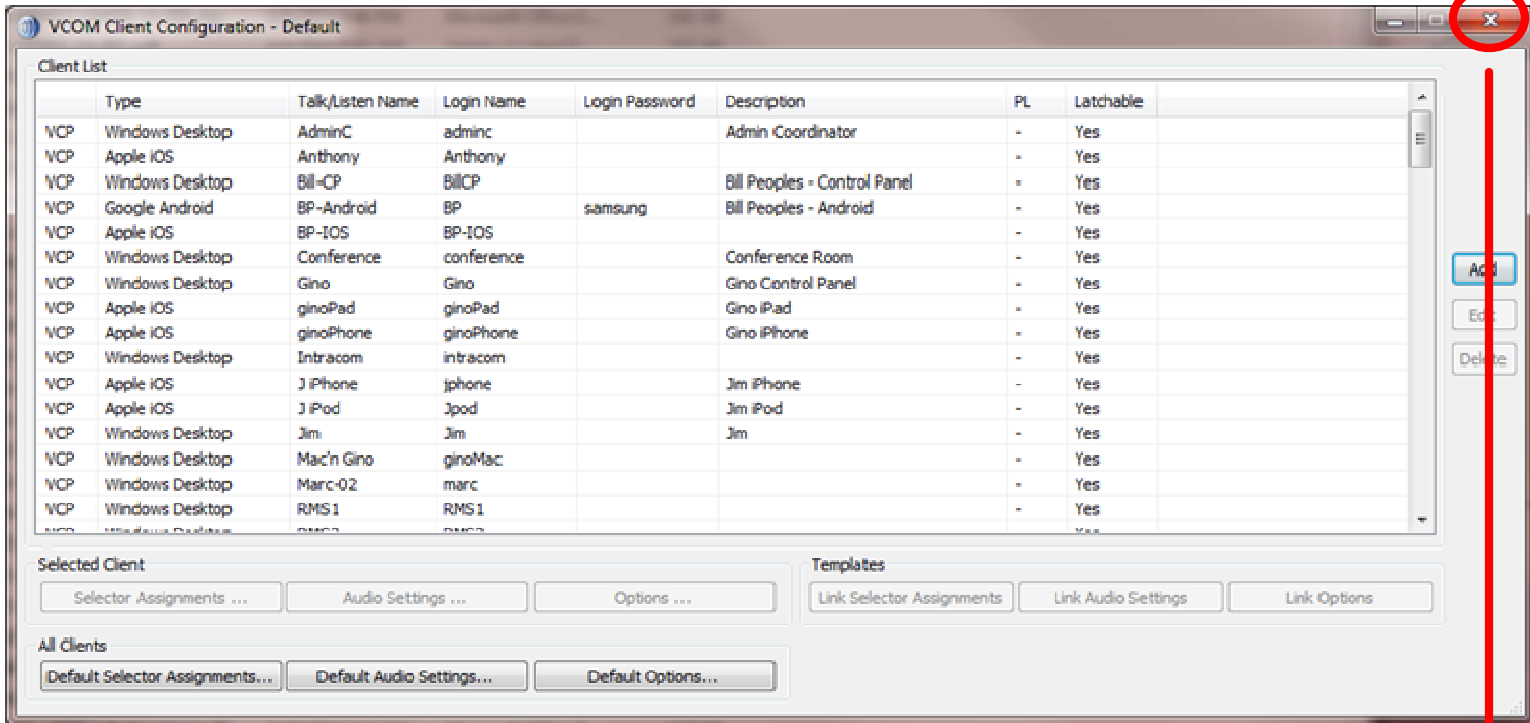
Note: the order placed on the right determines the assignment #

Click OK when Complete

Example above:

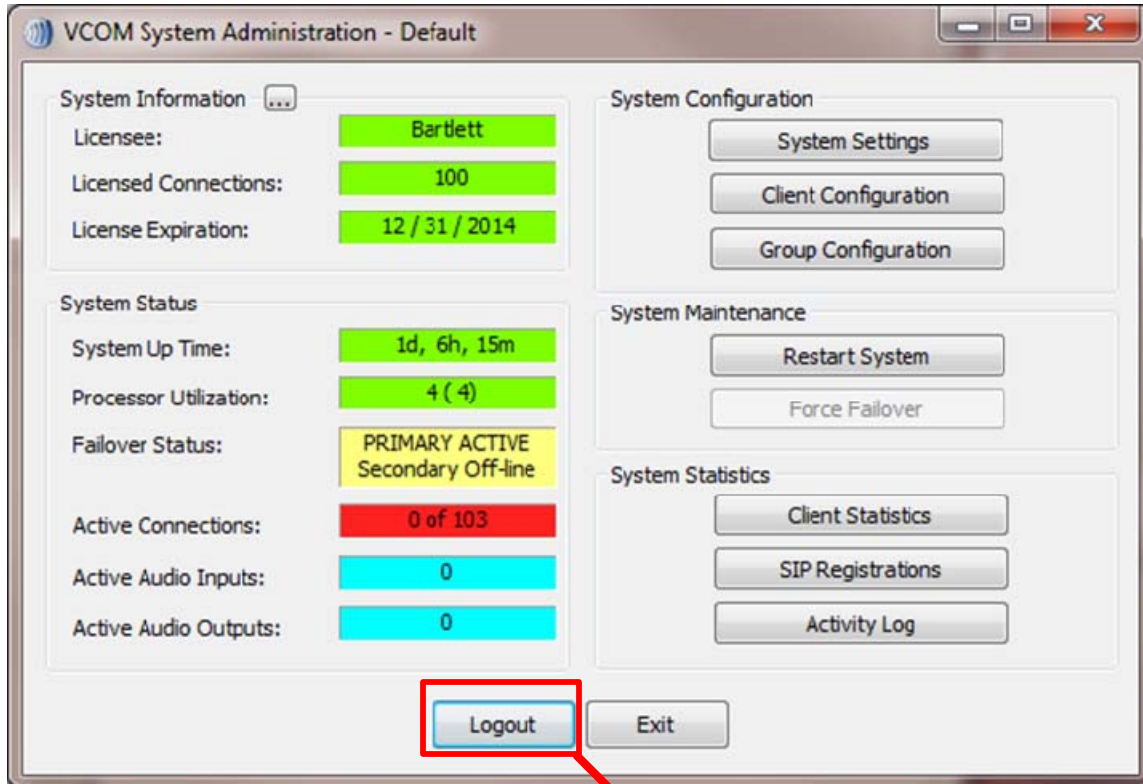
- Phone Key 1 will connect to Jim
- Phone Key 2 will connect to RP1
- Phone Key 3 will connect to BTR_Demo
- Phone Key 4 will connect to SIP-BTR-A
- Phone Key 5 will connect to SIP-BTR-B

Intracom VCOM v331 Inward DTMF configuration



Close this window

Intracom VCOM v331 Inward DTMF configuration



**Logout of the System
Administration Program**