

Intracom Vcom Group Configuration v331



VCOM System Administration.Ink

Open the Vcom System Administrator Program

The screenshot shows the 'VCOM System Administration Login - Default' dialog box. It has a title bar with a close button (X). The main area contains a 'Login Name' field with 'admin' entered, a 'Login Password' field which is empty, and a 'LOGIN' button to the right. Below these fields is a large empty text area. At the bottom left is a 'Configure...' button, and at the bottom right is a checkbox labeled 'Login Automatically' which is currently unchecked.

User: admin

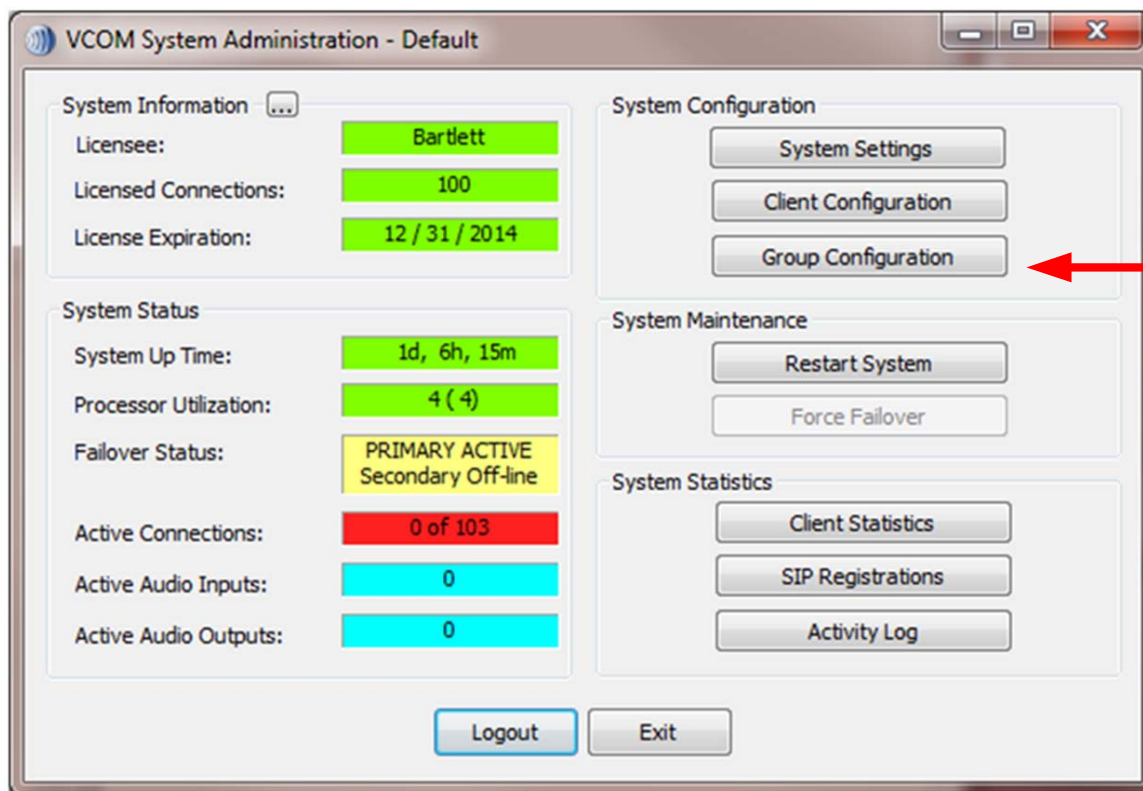
Password: *None*

The screenshot shows the 'VCOM System Administration Configuration - Default' dialog box. It has a title bar with a close button (X). The main area is titled 'Network Settings' and contains two IP address fields. The first is 'System Configuration IP Address' with a dropdown menu showing '192.168.1.149'. The second is 'Virtual Matrix IP Address' with a text field containing '192.168.1.34' and a port field containing '1000'. An 'Apply' button is located at the bottom center.

This is your computer address (Do not change)

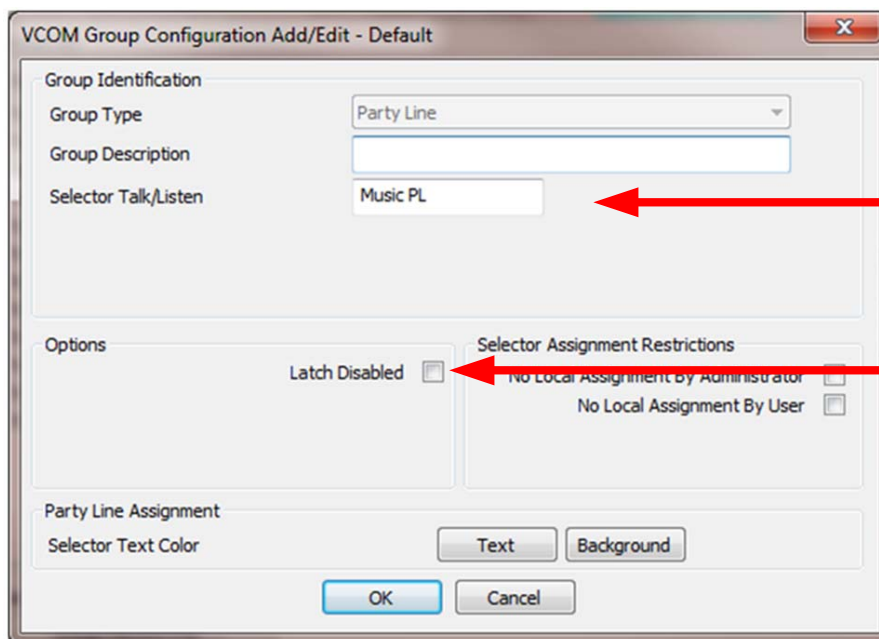
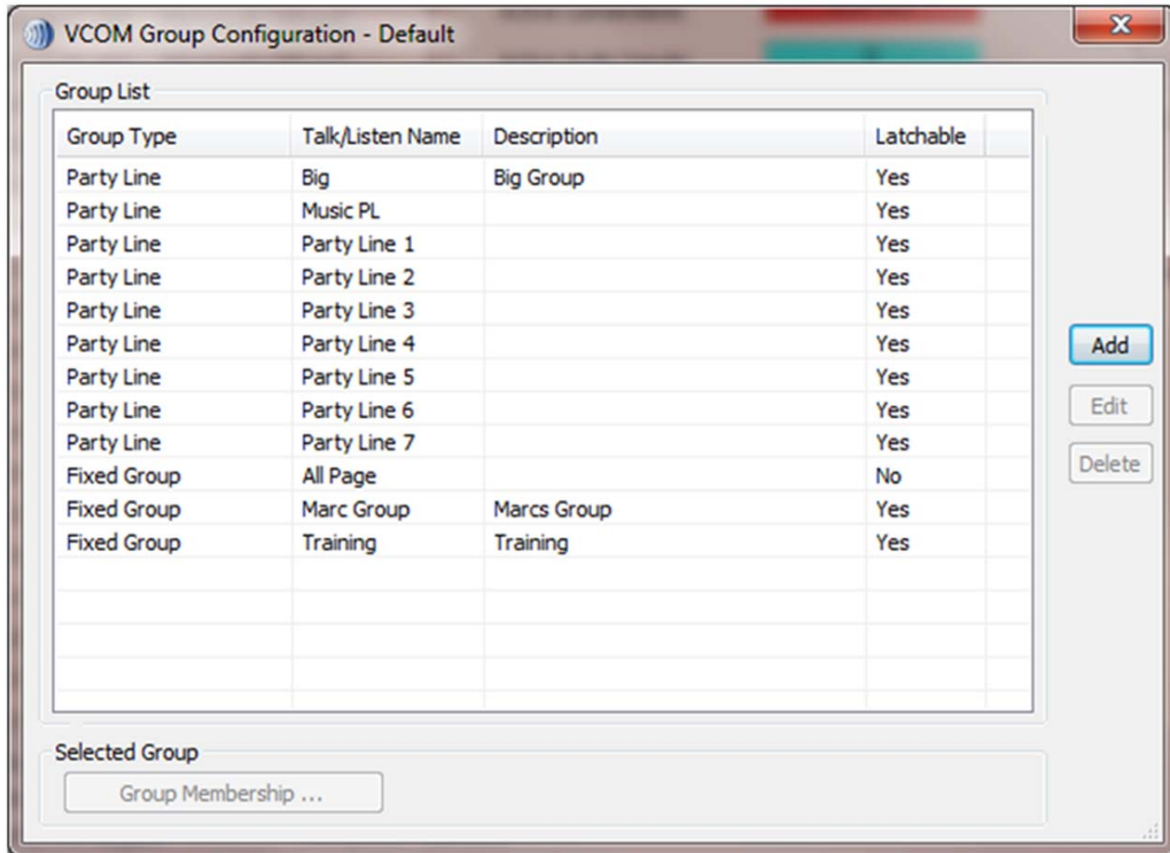
If you can not log into the Virtual matrix, verify the virtual Matrix IP address is correct.

Intracom Vcom Group Configuration v331



Enter into the Group Configuration tab

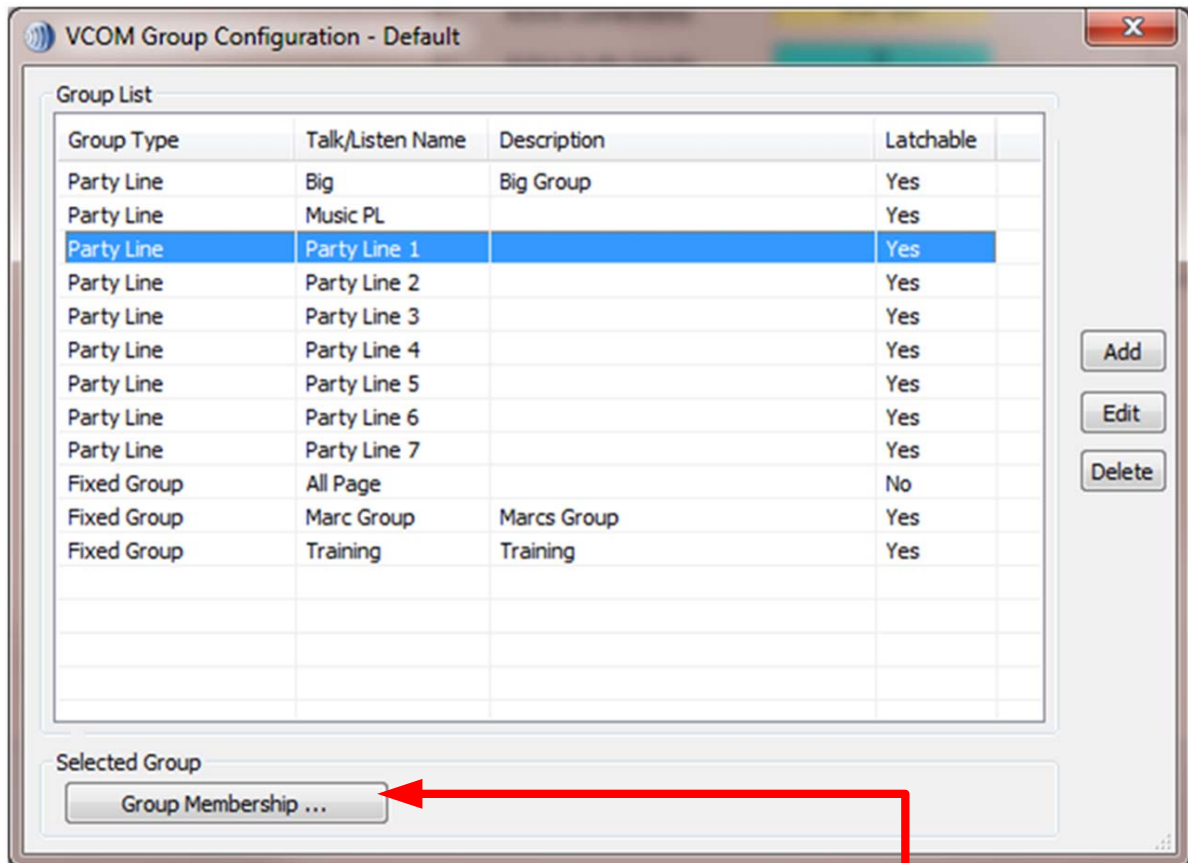
Intracom Vcom Group Configuration v331



Latch Disable will not allow Control panels to latch this key to talk.

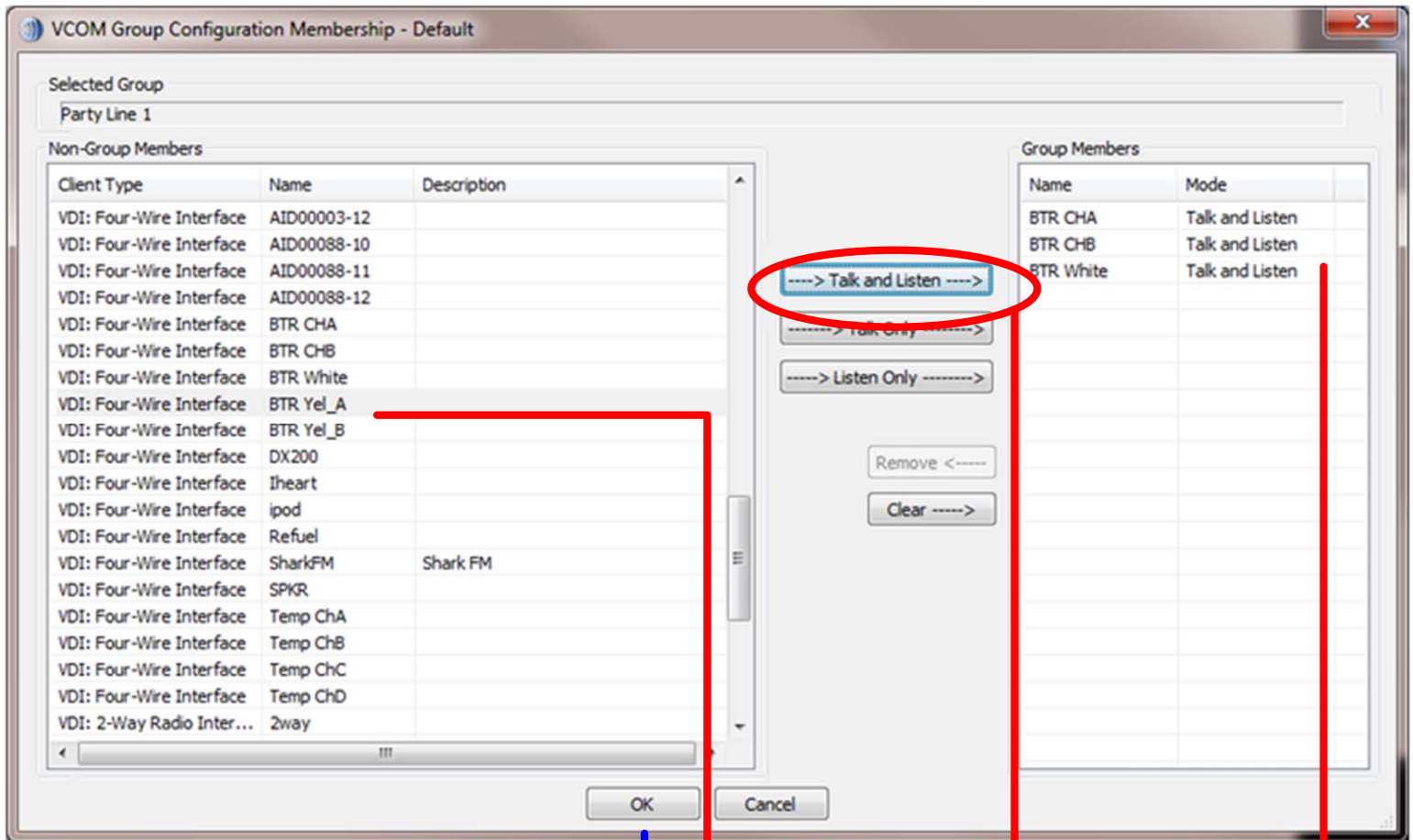
Changing the Talk label will rename the key in your system (ie. Crane Ops)

Intracom Vcom Group Configuration v331



Highlight the Group you wish to modify. Select the Group Membership Icon

Intracom Vcom Group Configuration v331



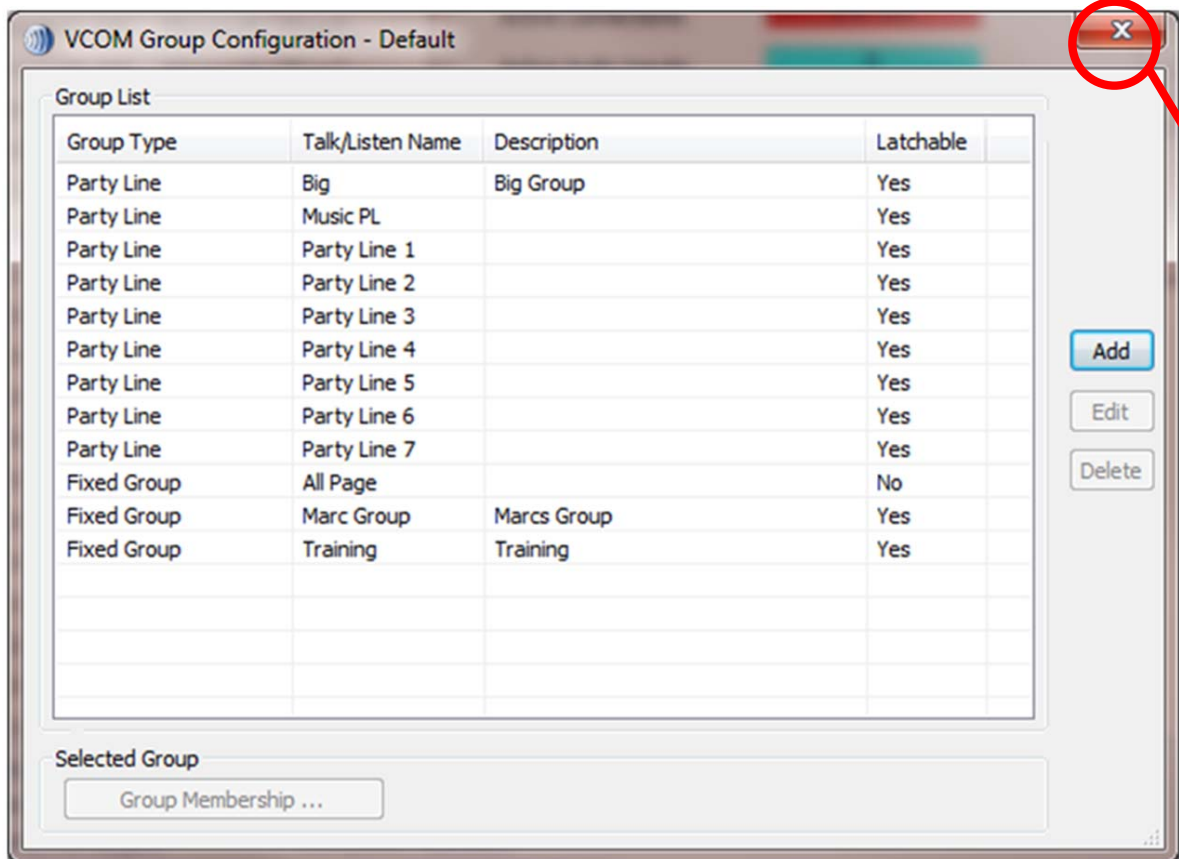
Select the device you want to add to the group

Click on Talk and Listen, so the device can talk and hear from the group

The devices that are in the Group show here.

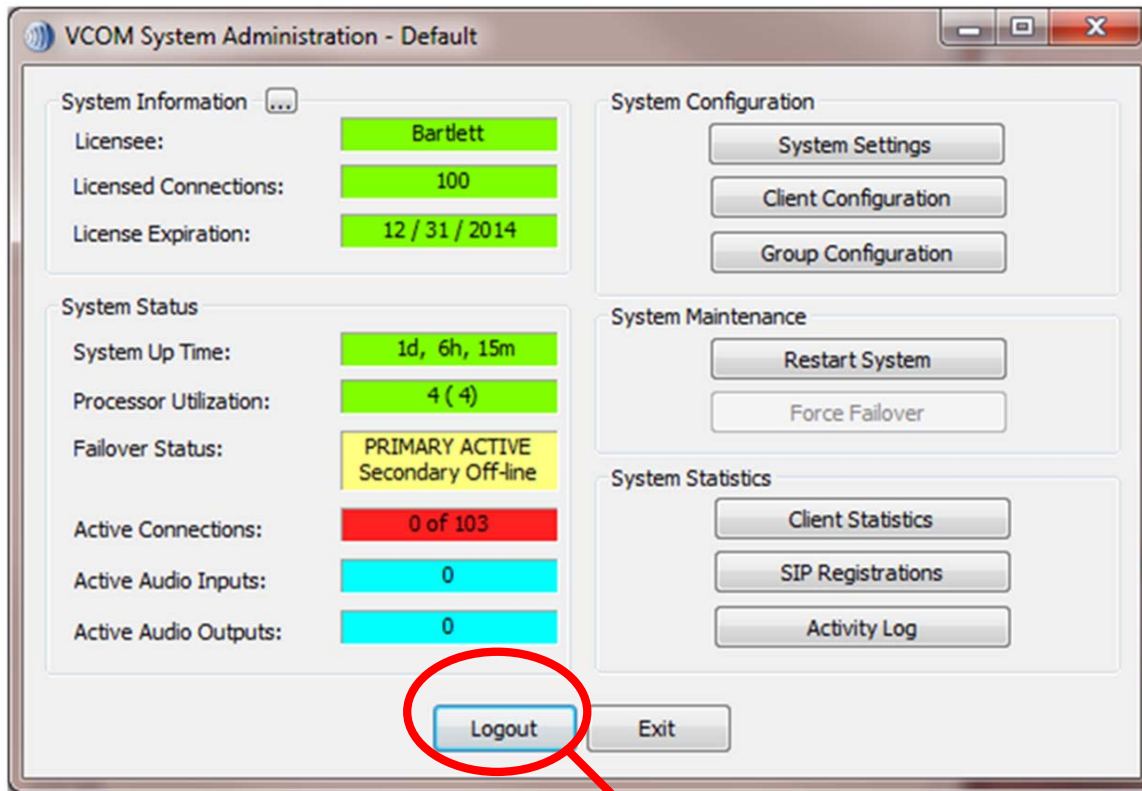
Select ok. The devices are now linked.

Intracom Vcom Group Configuration v331



Close this window

Intracom Vcom Group Configuration v331



Logout of the System Administration Program