

Intracom Virtual Control Panel



Control Panel Configuration



Control Panel Statics



Control Panel Options



Control Panel Log Off

Control Panel Talk and Listen Keys



- Listen – Click on the **Green** side of the key will latch the audio device to constant listen.

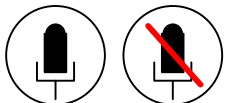


- Talk – Click on the **Red** side of the key will latch the device to constant talk.



- Blinking, or constant white text on the key means that audio is detected on that key label.

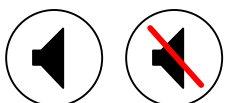
Audio Controls



Mic On, Activates/Deactivates any microphone connected to the system.

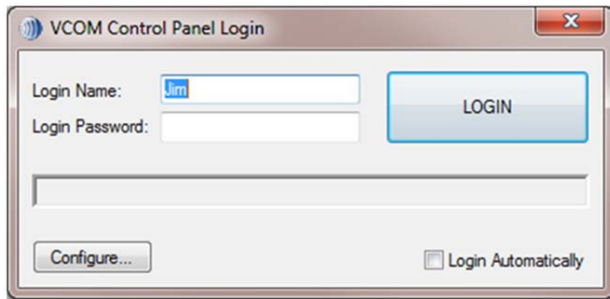


Intercom Volume, increases/decreases the intercom sound coming from this panels speaker or Headset.



Speaker On, Activates the Loud Speaker Connected to the computer. When off, the headset ear pieces continue to work.

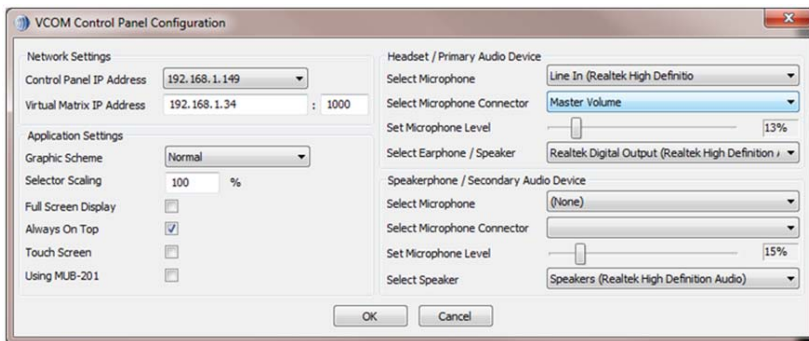
Intracom Virtual Control Panel Login



User Name: Enter this locations user name.

Password: Leave Blank

Control Panel Configuration



Select Microphone: Select the Headset connected to this workstation.

Microphone Connector: Microphone of the headset

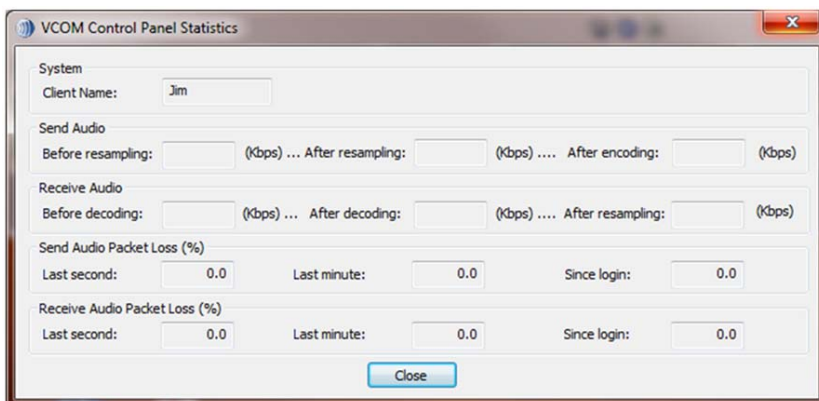
Select Earphone : Earphones of the headset

Control Panel Address: This is the IP Address of the workstation.

Virtual Matrix Address: This is the IP address of the Matrix Server.

Select Speaker: Enter loudspeaker for this workstation. If loudspeakers are not connected, leave blank.

Misc. Screens



This screen shows the audio send and receive data rate from this control panel

