

Intracom VCOM AID Device Interface



Windows Icon

Open the Vcom Device Interface Program



Linux Icon

Icons Maybe Different

VCOM Device Interface Configuration

Network Settings

Device Interface IP Address: 192.168.1.200

Virtual Matrix IP Address: 192.168.1.34 : 1000

Monitor Device

Select Speaker: (None)

Logic Input/Output

Select GPIO Device #1

Select GPIO Device #2

Select GPIO Device #3

Apply

This is the Workstations IP address, No need to change.

If you can not log into the Virtual matrix, verify the virtual Matrix IP address is correct.

Intracom Vcom Device Interface

VCOM Device Interface

Double Click the line to select

Login Name	Talk/Listen Name	Status	Monitor	GPI #1	GPI #2	GPO #1	GPO #2
AID00088-01	DX200	Connected					
AID00088-02	White/White	Connected					
AID00088-03	Red/Red	Connected					
AID00088-04	Temp ChC	Connected					
AID00088-05	Temp ChD	Connected					
AID00088-06	BTR White	Connected					
AID00088-07	BTR Yel_A	Connected					
AID00088-08	BTR Yel_B	Connected					
AID00088-09	SPKR_Box	Connected					
AID00088-10	AID00088-10	Connected					
AID00088-11	AID00088-11	Connected					
AID00088-12	AID00088-12	Connected					

Selected Device(s)

LOGIN / LOGOUT

Login Automatically

All Devices

LOGIN / LOGOUT

Monitor Input Monitor Output Simulate GPI(s) Toggle GPO(s) Statistics... Configure...

Login Automatically **only** the ports that are required.

When All channels are Programmed. This is a manual login/logout.

VCOM Device Configuration

Login Information

Login Name: AID00088-01

Login Password: []

Analog to Digital Audio Device

Select Input Device: AudioFire12-0

Select Input Connector: Analog Input 1

Select Input Channel: []

Set Input Level: []

Select Output Device: AudioFire12-0

Select Output Connector: Analog Output 1

Select Output Channel: []

Set Output Level: []

Logic Input/Output

Select Logic Input #1: []

Select Logic Input #2: []

Select Logic Output #1: []

Select Logic Output #2: []

Apply

Unit AID Number

AID00088-01

Audio Port Number (Input/Output)

Intracom Vcom Client Configuration



VCOM System Administration.Ink

Open the Vcom System Administrator Program

VCOM System Administration Login - Default

Login Name: LOGIN

Login Password:

Login Automatically

User: admin
Password: *None*

VCOM System Administration Configuration - Default

Network Settings

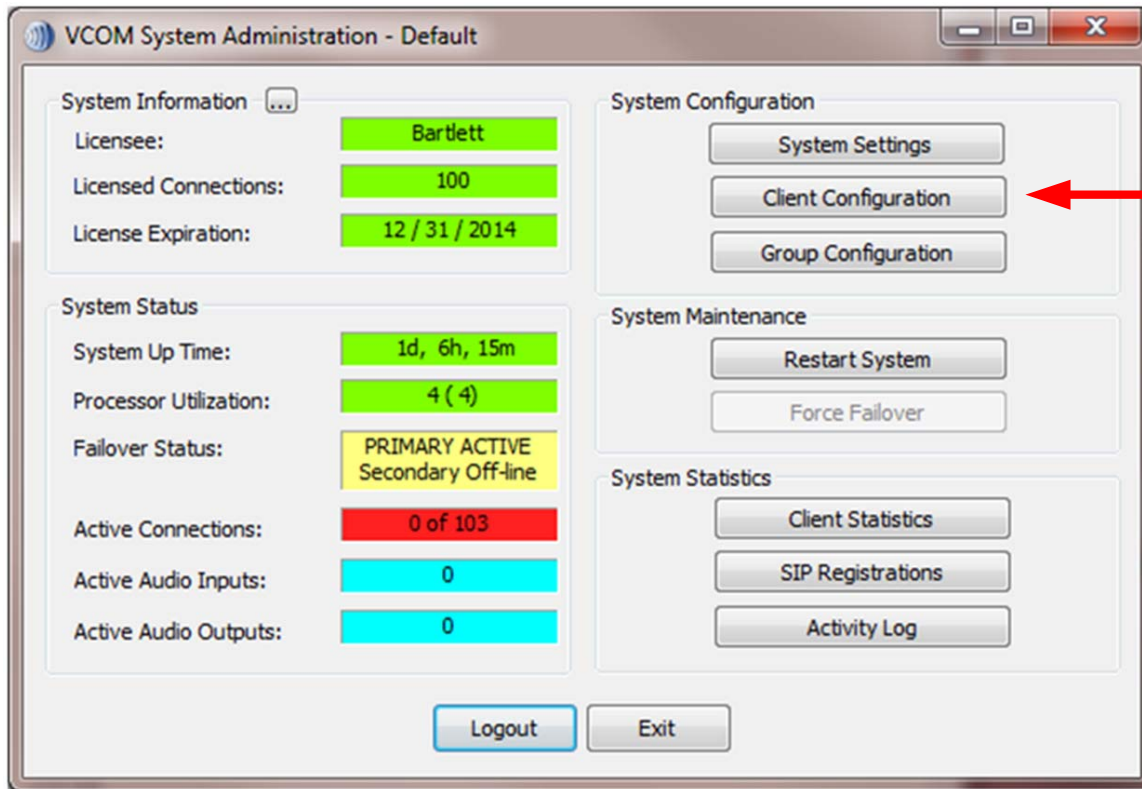
System Configuration IP Address: 192.168.1.149

Virtual Matrix IP Address: 192.168.1.34 : 1000

This is your computer address (Do not change)

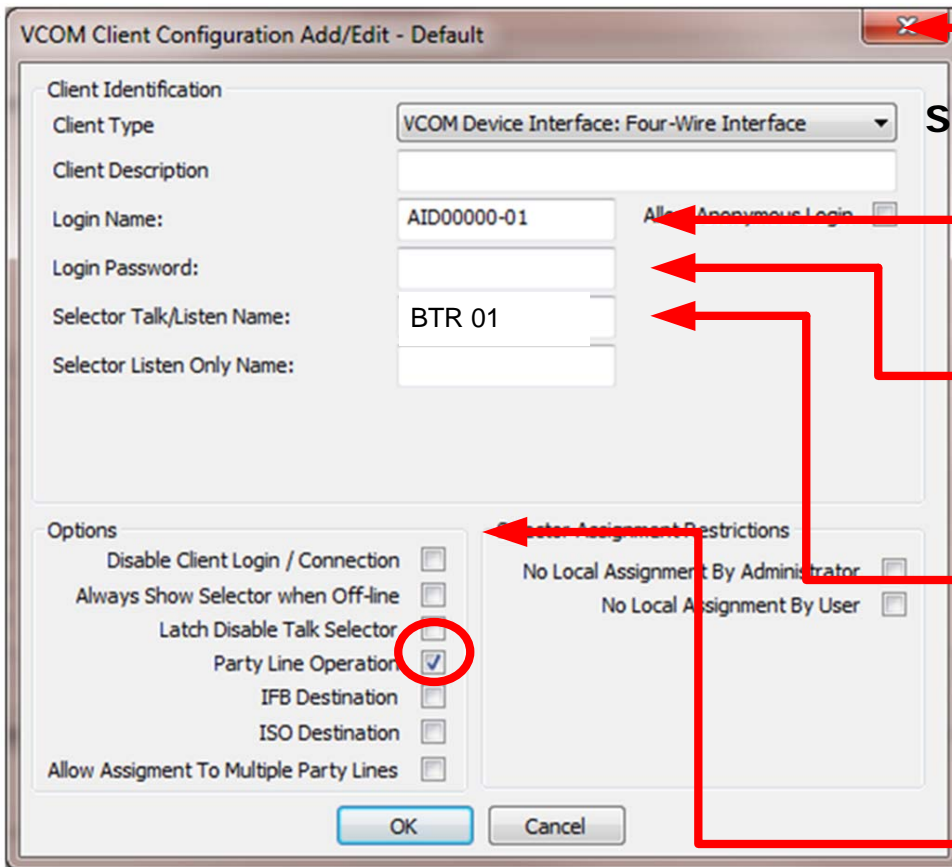
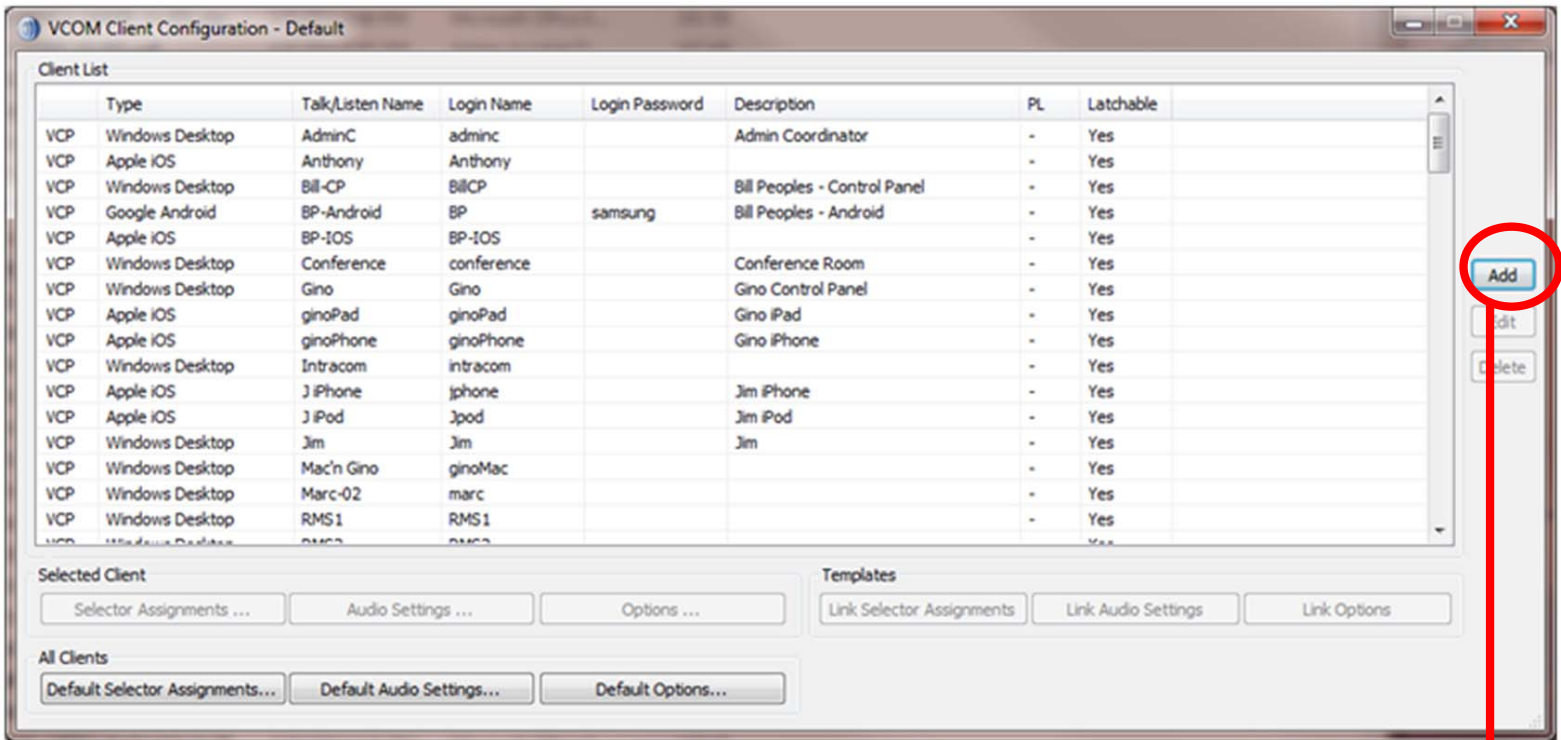
If you can not log into the Virtual matrix, verify the virtual Matrix IP address is correct.

Intracom Vcom Client Configuration



Enter into the Client Configuration tab

Intracom Vcom Client Configuration



Settings for a BTR Device

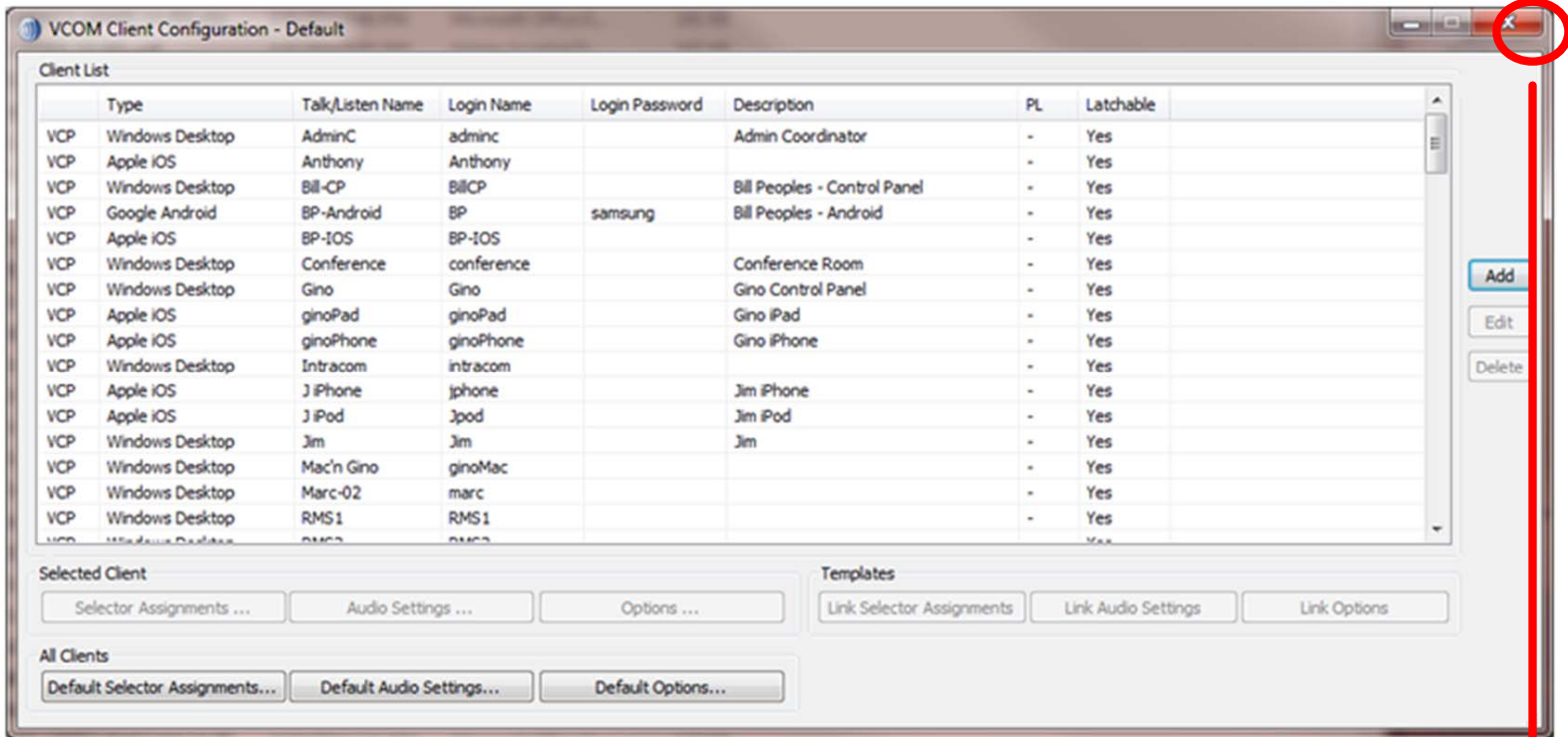
Enter the user name for this control panel location.

Enter the password for this control panel location.
*Note PW can be (blank)

Enter the Name you want to appear on all Control Panels

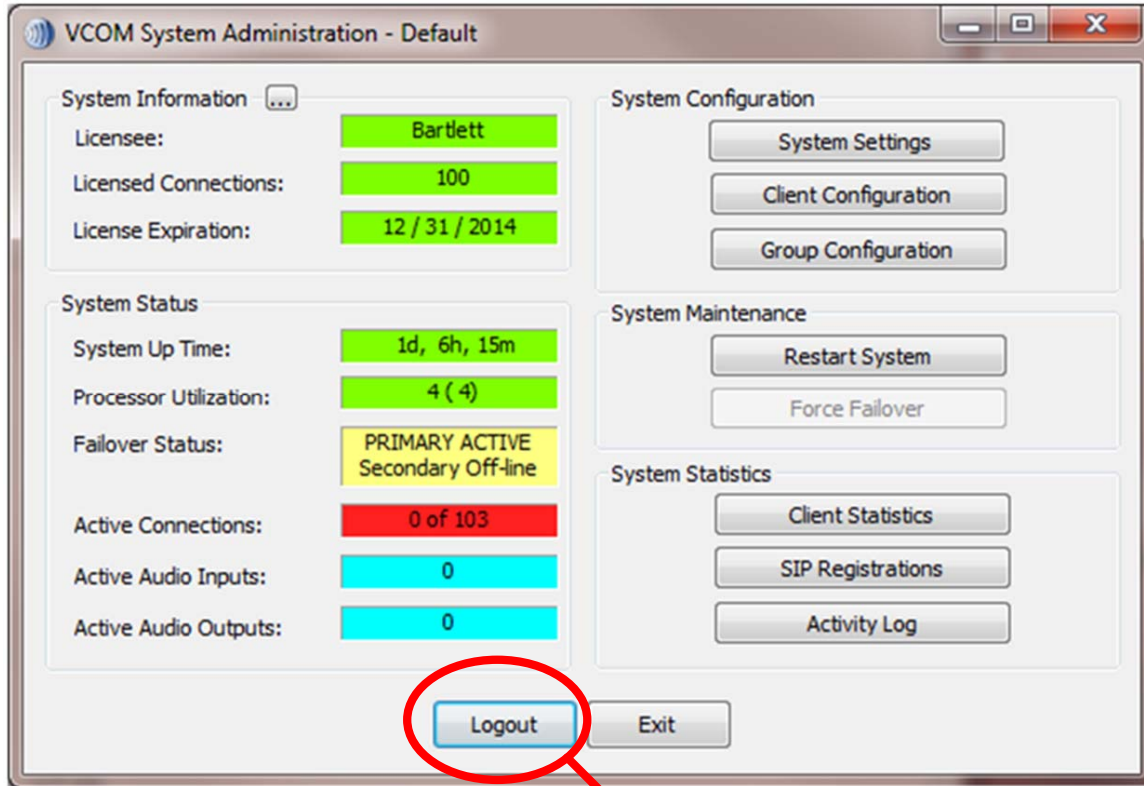
This setting allows two different control panels to hear both side of the conversation going to this audio device.

Intracom Vcom Client Configuration



Close this window

Intracom Vcom Client Configuration



Logout of the System Administration Program